

# HUNTLY PRIMARY SCHOOL - 2024 Grades and Staffing

<b>Principal</b>		<i>Jason Lee</i>
LC6	<b>Foundation/1</b>	<i>Lisa Clohesy</i>
LC7	<b>Foundation/1</b>	<i>Morgan Bibby</i>
LC8	<b>Foundation/1</b>	<i>Alicia McGrath</i>
LC9	<b>Foundation/1</b>	<i>Laura Murdoch &amp; Ashlea Bowles</i>
LC14	<b>Foundation/1</b>	<i>Avril Dolphin</i>
LC10	<b>Grade 2</b>	<i>Marijke Harrison</i>
LC11	<b>Grade 2</b>	<i>Justine Russell</i>
LC4	<b>Grade 3/4</b>	<i>Darin Lord</i>
LC5	<b>Grade 3/4</b>	<i>Skye Bennett &amp; Jess Monteath</i>
LC12	<b>Grade 3/4</b>	<i>Alan Gillies &amp; Josie Tresize</i>
LC13	<b>Grade 3/4</b>	<i>Aimee Phegan</i>
LC1	<b>Grade 5/6</b>	<i>Matt Lehane</i>
LC2	<b>Grade 5/6</b>	<i>Cody Dunstan</i>
LC3	<b>Grade 5/6</b>	<i>Morgan Trahair</i>
<b>Intervention</b>		<i>To Be Confirmed</i>
<b>Specialist Teachers</b>	Art	<i>Lachlan O'Toole</i>
	Chinese	<i>To Be Confirmed</i>
	Physical Education	<i>Jess Monteath &amp; Lachlan O'Toole</i>
	Music	<i>Kelly Effenberg</i>
<b>Support Staff</b>	Administration	<i>Sharon Green &amp; Anita Whittle</i>
	Education Support	<i>Selena Van Riet (Lead ES), Jess Armstrong, Alison Mills, Naomi Smart, Melanie Hanson, Matt Flavelle, Kerrie Caulfield, Geordie Hogan, Samantha Lempio Franklin, Nancy Douglas and Kylie Evans.</i>
	Wellbeing Officer:	<i>Dianne Kaplan</i>
	Library Support:	<i>Leonie Strauch</i>
	Maintenance	<i>Don Erskine</i>
<b>Facilities/OHS Manager &amp; OSHC Co-ordinator</b>		<i>Selena Van Riet</i>
<b>Before &amp; After Outside School Care Educators</b>		<i>Kate Ruedin &amp; Sarah Boehringer</i>

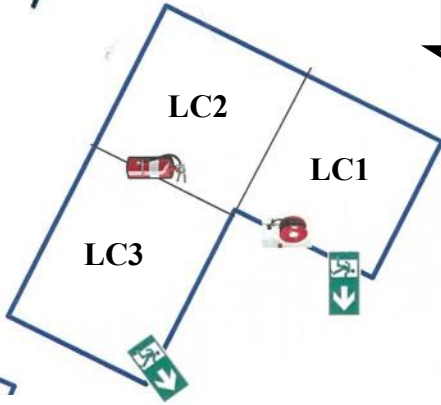
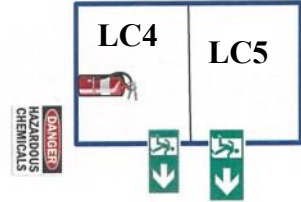
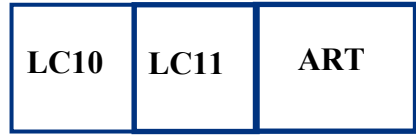
## SCHOOL TERM DATE 2024

<b>TERM 1</b>	Thursday	25th January	* Collect and pay for ordered books from Education Plus at school Multi Purpose Room 11.00am to 3.00pm
	Monday	29th January	* 2024 Parent Payment Charges paid at school office
	Tuesday	30th January	Statewide Student Free Day (staff officially return to school)
	Wednesday	31st January	Grades Foundation to 6 'Welcome to 2024' - Start Up Meeting Parent/Student/Teacher (by appointment)
	Thursday	1st February	School Starts 9:00am for Grades 1 to 6
	Friday	2nd February	Foundation - Literacy & Numeracy Entry Assessments (by appointment)
	Thursday	28th March	Foundation - Literacy & Numeracy Entry Assessments
			Foundation students first FULL day of school. 9.00am-3.30pm
			End of Term
<b>TERM 2</b>	Monday	15th April	to Friday 28th June
<b>TERM 3</b>	Monday	15th July	to Friday 20th September
<b>TERM 4</b>	Monday	7th October	to Friday 20th December

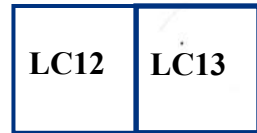
GUNGURRU ROAD

BRUNEL STREET

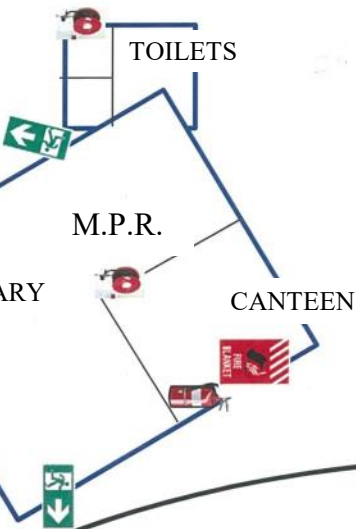
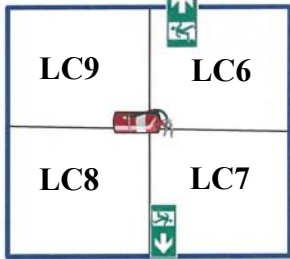
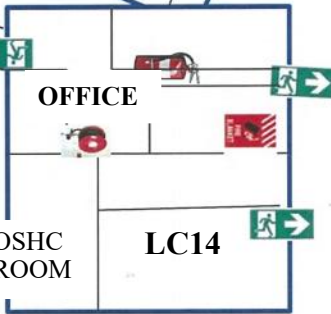
ENTRY



VISITORS ENTRY



ENTRY



OVAL