



# OUTSIDE SCHOOL HOURS

huntlyoshc.global2.vic.edu.au

TERM 1

## Inside This Issue

Settling in

Code Red Days

Menu

Movie Night

Hat and Sunscreen

Permanent

Bookings

Accounts

Program

**2017:** The children have settled in very nicely over the past 3 weeks. We have been a lot of outside activities, playing on the playground, doing a lot of MPR sport like bobs and statutes and many more.

**Chickens:** Some of our children from OSHC have planted a nectarine and plum tree in our chicken pen to give them shade. The pen is looking fantastic! More work will be done in the nesting area.

**CODE RED DAYS:** A reminder that this service is listed on the Bushfire At-Risk Register and will be closed on Code Red Days as per DET Policy.

**PERMANENT BOOKINGS:** Cancellations need to be made by 2.30pm on the day. Permanent booking are bookings made when a child/ren will be in attendance permanently on certain days for eg every Mon and Wed or everyday of the week for more then 1 week. Outside School hours Care operates everyday of the school term from 3.30pm to 6.00pm. Cost \$13 per child per night and bookings must be made through the school office.

Broad brim hats must be worn during outside play this term.

## OSHC BLOG

Kate will be up loading photos and children's work on our blog in the near future. If you are having trouble logging on please see the OSHC staff.

### Menu

Our menu varies from yoghurt, cereal, cheese and crackers, dips. Fruit and Vegetable platters are available everyday. They are alternated due to availability.



OSHC PHONE  
NUMBER

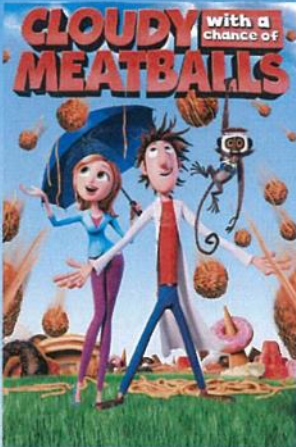
0474148067

3:30pm - 6pm Mon- Fri

Issue 2 1st March 2017

## OSHC Movie night.

Just a reminder that on the 2nd of March we will be watching Cloudy With a Chance of



Meatballs which is Rated PG.

If you wish for your child/ren not to watch this movie please advise the staff on the 28th on Feb.

Thank you.

### Brief rundown of our day:

3.30pm: Transition from School to OSHC.

3.45pm: Snack at MPR

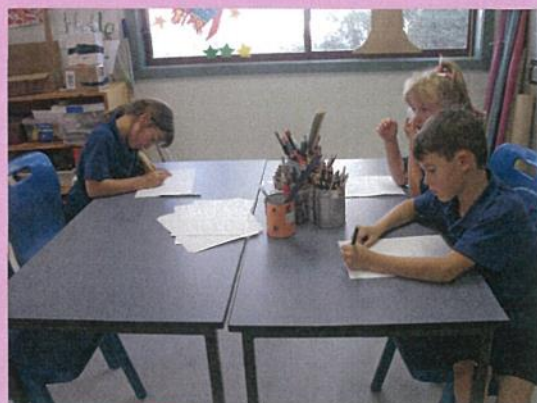
4.00pm: Active play– MPR, outside play.( depending on the weather.) Signs will be displayed on the OSHC door indicating where children are in the school.

5.00pm OSHC room.

### Movie week:

Being our first day of movie week  
the children shared their favourite movie  
or TV show character by drawing it.

The children loved drawing Minions, Flicker the horse and monsters from  
Monster inc.



# OSHC MONTHLY

| THEME  | AUTUM   |   |   |   |
|--|---|---|---|---|
| <u>Monday 6th March</u><br><br><b>Leaf rubbings</b><br><br><i>Outcomes 4.1</i><br><i>Principal: 3</i><br><i>Practice: 1 -</i>          | <u>Tuesday 7th March</u><br><br><b>Make a simple Kits</b><br><br><i>Outcome: 4.2</i><br><i>Principal: 1</i><br><i>Practice: 2</i> | <u>Wednesday 8th March</u><br><br><b>Cooking Apple Pies</b><br><br><i>Outcome: 1.1</i><br><i>Principal: 2</i><br><i>Practice: 4</i>     | <u>Thursday 9th March</u><br><br><b>Outside Play</b><br><br><i>Outcome 3.2</i><br><i>Principal 1</i><br><i>Practice 5</i>   | <u>Friday 10th March</u><br><br><b>Science</b><br><br><i>Outcome: 4.2</i><br><i>Principal: 1</i><br><i>Practices:4</i>                                |
| THEME  | DANCE+ SING   |   |   |   |
| <u>Monday 13th March</u><br><br><b>HOLIDAY NO SCHOOL</b><br><br><i>Outcome</i><br><i>Principal</i><br><i>Practice</i>                  | <u>Tuesday 14th March</u><br><br><b>Wii Sing</b><br><br><i>Outcome: 1.3</i><br><i>Principal 2</i><br><i>Practice 2</i>            | <u>Wednesday 15th March</u><br><br><b>Musical Instrument Craft</b><br><br><i>Outcome 4.3</i><br><i>Principal 3</i><br><i>Practice 3</i> | <u>Thursday 16th March</u><br><br><b>Wii Zumba</b><br><br><i>Outcome 3.2</i><br><i>Principal 2</i><br><i>Practice 2</i>     | <u>Friday 17th March</u><br><br><b>Outside Play</b><br><br><i>Outcome 3.2</i><br><i>Principal 1</i><br><i>Practice 5</i>                              |
| THEME  | AUST ANIMALS  |   |   |   |
| <u>Monday 20th March</u><br><br><b>Outside Play</b><br><br><i>Outcome 3.2</i><br><i>Principal 1</i><br><i>Practice 5</i>               | <u>Tuesday 21st March</u><br><br><b>Sand Art</b><br><br><i>Outcome: 4.1</i><br><i>Principal 1</i><br><i>Practice 1</i>            | <u>Wednesday 22nd March</u><br><br><b>Clay Animals</b><br><br><i>Outcome: 5.1</i><br><i>Principal 3</i><br><i>Practice 2</i>            | <u>Thursday 23rd March</u><br><br><b>Dot Painting</b><br><br><i>Outcome: 2.2</i><br><i>Principal 4</i><br><i>Practice 6</i> | <u>Friday 24th March</u><br><br><b>Paper plate snakes</b><br><br><i>Outcome: 4.2</i><br><i>Principal 3</i><br><i>Practice 4</i>                       |
| THEME  | EASTER  |   |   |   |
| <u>Monday 27th March</u><br><br><b>Coloring Sheets/ painting</b><br><br><i>Outcome: 1.1</i><br><i>Principal 1</i><br><i>Practice 7</i> | <u>Tuesday 28th March</u><br><br><b>Foam Cup Bunny</b><br><br><i>Outcome: 4.1</i><br><i>Principal 1</i><br><i>Practice 1</i>      | <u>Wednesday 1st March</u><br><br><b>Easter Bunny Bonnets</b><br><br><i>Outcome 4.1</i><br><i>Principal 1</i><br><i>Practice 4</i>      | <u>Thursday 2nd March</u><br><br><b>Easter baskets</b><br><br><i>Outcome 1.1</i><br><i>Principal 2</i><br><i>Practice 2</i> | <u>Friday 3rd March</u><br><br><b>End of Term 2.30pm. Start Easter egg Hunt.</b><br><br><i>Outcome 3.1</i><br><i>Principal 1</i><br><i>Practice 2</i> |

Daily activities include cars, reading, board games, Lego, play dough, drawing, sports, movies, dress ups, art, craft and quiet activities. We will also be spending time in our vegetable garden.

OSHC staff reserve the right to make changes to this program according to the weather, children's needs and requirements. If you have any queries regarding this program, please contact the OSHC Staff.

Thank You, Selena, Kate and Jess.

 Children's choice activity